

# JOANN CASTILLO

DIGITAL MARKETING AND DESIGN





## HELLO.

My name is JoAnn. I am based in New York City where I work with organizations in the cultural and nonprofit sector.

I am especially interested in how socially engaged art, equitable community development and new media connect. I am passionate about connecting the public to activism, art and story through digital strategy and design.



107

PRESENTED BY

LOWER MANHATTAN CULTURAL COUNCIL

LEADERSHIP SUPPORT

AMERICAN EXPRESS

MELLON FOUNDATION

MAJOR SUPPORT

Battery Park City Authority

Goldman Sachs

HOWARD GILMAN FOUNDATION

Howard Hughes

SEAPORT DISTRICT NYC

FRIENDS OF THE FESTIVAL

conEdison

ARTS AL FRESCO

DOWN TOWN ALLIANCE

m&f MERTZ GILMORE FOUNDATION

NYC Cultural Affairs

NEW YORK STATE COUNCIL ON the Arts

LMCC.net/R2R

fb.com/LMCCNYC

LMCC\_NYC

LMCC

RIVER RIVER

20TH EDITION

LMCC.net/R2R

Thank you for joining us at  
**The Downtown Dinner**  
*Reimagined*

June 8, 2021

Evening's Program



Menu

APPETIZER

**HEIRLOOM TOMATO AND MOZZARELLA SALAD**  
 Summer Fruit, Basil, Calabrian Chili-Lemon  
 Vinaigrette  
*(vegetarian and gluten free)*

**VEGETABLE SUMMER ROLL**  
 Organic Carrots, Persian Cucumber,  
 Avocado, Watermelon Radish,  
 Herbal-Peanut Dipping Sauce  
*(vegan and gluten free)*

**MINI MAINE LOBSTER ROLLS**  
 Sun Burst Tomato, Mustard Mayonnaise, Tarragon

ENTRÉE

**GRILLED LAMB GYRO**  
 Cucumber Tzatziki, Pickled Red Onion, Herb Salad,  
 Harissa, Gem Lettuce Salad

**SLOW ROASTED CAULIFLOWER BIRRA TACOS\***  
 Organic Corn Tortillas, Guajillo Chili-Lime Broth

*\*This vegan and gluten free option is available upon request. Please ask your server.*

FRENCH FRIES FOR THE TABLE

DESSERT

POPBAR POPSICLES

SIGNATURE COCKTAIL

**THE DOWNTOWN DELIGHT**  
 Grey Goose Paire, St Germain, lime juice,  
 ginger beer



**WORLD PREMIERE | JUNE 18 & 19, 7:45 P.M.**  
 Approx. 40 Minutes

**Nelson A. Rockefeller Park in Battery Park City  
 Enter at Chambers St. and River Terrace**

Please note there is no formal seating in Nelson A. Rockefeller Park.

Project conceived by Sara Mearns and Pam Tanowitz  
 Choreography by Pam Tanowitz  
 Original score composed by Ted Hearne  
 Costumes by Reid Bartelme and Harriet Jung  
 Sound design by Garth MacAleavey

Co-presented by Lower Manhattan Cultural Council,  
 Battery Park City Authority, and the Fisher Center at Bard.

DANCERS

Sara Mearns and Taylor Stanley,  
 courtesy of New York City Ballet  
 Reid Bartelme  
 Jason Collins  
 Christine Flores  
 Zachary Gonder  
 Lindsey Jones  
 Victor Lozano  
 Vincent McCloskey  
 Maile Okamura  
 Melissa Toogood

Jason Collins  
 Artistic Associate, Pam Tanowitz Dance

MUSICIANS

Ted Hearne (voice), Taylor Levine  
 (guitar) and Rachel Drehmann, Daniel Salera,  
 Kate Sheeran, Colin Weyman (horns)

Co-commissioned by Lower Manhattan Cultural Council, the Fisher Center at Bard, and The Joyce Theater. Produced by the Fisher Center at Bard, with residency funds provided by Jay Franke & David Herro. The project was developed as part of LMCC's Extended Life Dance Development program made possible in part by The Andrew W. Mellon Foundation and was created, in part, with the support of The Joyce Theater Foundation's Artist Residency Center, made possible by lead funding from The Andrew W. Mellon Foundation, Howard Gilman Foundation, LuEsther T. Mertz Charitable Trust, and Doris Duke Charitable Foundation.

A Fisher Center at Bard Production

Audio equipment provided by Sound Associates, Inc.

Part of LMCC's 2019 River to River Festival.



**THURSDAY, SEPTEMBER 12, 2019  
 6PM - 9PM**

Thank you for joining us for this special opening party and preview! Tonight, we are celebrating all the supporters, project partners and artists who brought this space to life. We invite you to explore the building and engage with the exhibitions and special programs.

INAUGURAL EXHIBITIONS

**YTO BARRADA WITH GUEST ARTIST BETTINA**  
*The Power of Two Suns*  
 Upper Gallery

**MICHAEL WANG**  
*Extinct in New York*  
 Lower Gallery

AND JUST FOR TONIGHT...

**OLAFUR ELIASSON'S LITTLE SUN**  
*Sunlight Graffiti*  
 Studios, Upper Level

**JESSE PARIS SMITH**  
*Immersive Sound & Music*  
 Studio A3, Upper Level

**YOKO ONO**  
*Wish Tree*  
 Studio A4, Upper Level

**DJS NIKKI AND AKU**  
 Cafe

WELCOME TO OUR ARTISTS-IN-RESIDENCE

The first cohort of artists will be in residence from September 2019 to November 2020. In this inaugural year, artists will explore themes encompassing social justice, social practice, NYC Harbor, Governors Island history, water, climate change, and environment.

Yto Barrada  
 Colleen Billing  
 Baris Gokturk  
 Maya Kaminishi Jeffereis  
 Brendan Kiely  
 Amy Khoshbin  
 Hilary Lorenz  
 Jillian McDonald  
 Ander Mikalson


Lize Mogel  
 Aviva Rahmani  
 Leah Raintree  
 Aida Šehović  
 Aaron Suggs  
 Asiya Wadud  
 Michael Wang  
 Hypokrit Theatre Company



THE ARTS CENTER  
GOVERNORS ISLAND  
LOWER MANHATTAN  
CULTURAL  
COUNCIL

INAUGURAL EXHIBITION  
**Michael Wang**  
*Extinct in New York*

Lower Gallery  
On view September 19 – October 31  
Thursday – Sunday from 12pm – 5pm



LMCC.net

THE ARTS CENTER  
GOVERNORS ISLAND  
VISITOR INFORMATION

THE ARTS CENTER  
GOVERNORS ISLAND  
VISITOR INFORMATION

THE ARTS CENTER  
GOVERNORS ISLAND  
VISITOR INFORMATION

THE ARTS CENTER  
GOVERNORS ISLAND  
VISITOR INFORMATION

THE ARTS CENTER  
GOVERNORS ISLAND  
VISITOR INFORMATION

ALSO ON VIEW



INAUGURAL EXHIBITION  
**Yto Barrada with guest artist Bettina**  
*The Power of Two Suns*

Upper Gallery  
On view September 19 – October 31  
Thursday – Sunday from 12pm – 5pm



THE TAKE CARE SERIES

Join us for a special exhibition featuring the work of artists who have been inspired by the COVID-19 pandemic. This series of exhibitions will explore the impact of the pandemic on our lives and the ways in which we are responding to it.

Exhibition Dates: September 19 – October 31  
Location: Lower Gallery, The Arts Center, Governors Island

For more information about the Take Care Series, visit us on our website or call us at 212-312-3100.

THE ARTS CENTER  
GOVERNORS ISLAND  
VISITOR INFORMATION

THE ARTS CENTER  
GOVERNORS ISLAND  
VISITOR INFORMATION

THE ARTS CENTER  
GOVERNORS ISLAND  
VISITOR INFORMATION

THE ARTS CENTER  
GOVERNORS ISLAND  
VISITOR INFORMATION

THE ARTS CENTER  
GOVERNORS ISLAND  
VISITOR INFORMATION

THE ARTS CENTER  
GOVERNORS ISLAND  
VISITOR INFORMATION

# HELP BIRDS ON THEIR JOURNEY



Billions of birds migrate at night. As they pass over big cities, they're drawn to light, becoming confused and even colliding with buildings. Ensure safe passage by turning out lights when not in use.

2018 | **YEAR OF  
THE BIRD**  
Visit [birdyearworld.org](http://birdyearworld.org)

# MADONNA

The Tube

Live at the Hacienda

27 January 1984

It was one of those moments that lodge in the collective memory. The year was 1984, not exactly a high point of pop-culture history—the era of big hair, jazz-funk, Duran Duran, Dallas and Ghostbusters. It was late January; the time of year, recent research has confirmed, that we find more depressing than any other. This edition of *The Tube*, broadcast half from Newcastle as usual and half from the Hacienda club in Manchester, served up the familiar mish-mash of videos, amateurish interviews and live performances.

*Gill Sans Bold 11pt/14pt*

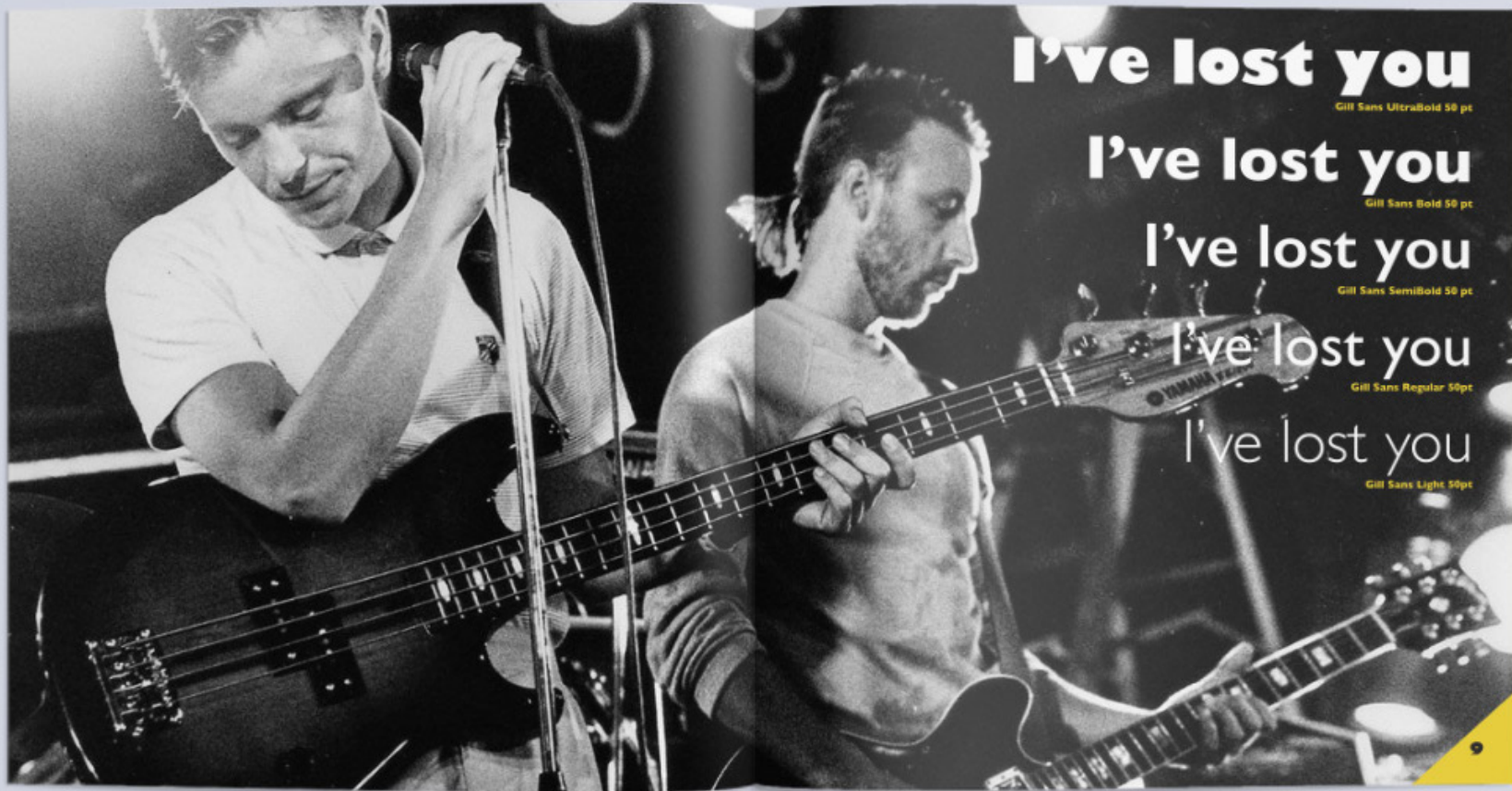
But then Jools Holland introduced someone different: female, American, focused, organised, poppy and dancey at the same time, a bundle of energy bursting out of the corner of the room, unknown but clearly going places. This was Britain's first glimpse of Madonna, before *Like a Virgin* or *Desperately Seeking Susan*, before Sean Penn and Guy Ritchie, Lourdes and Rocco, pointy bras and the *Sex* book, *Vogue* and *Ray of Light*, children's books and *Kabbalah*, *Live Aid* and *Live 8*. For a whole generation, it was a moment they wouldn't forget.

*Gill Sans SemiBold 12pt/14pt*



13





**I've lost you**

Gill Sans UltraBold 50 pt

**I've lost you**

Gill Sans Bold 50 pt

**I've lost you**

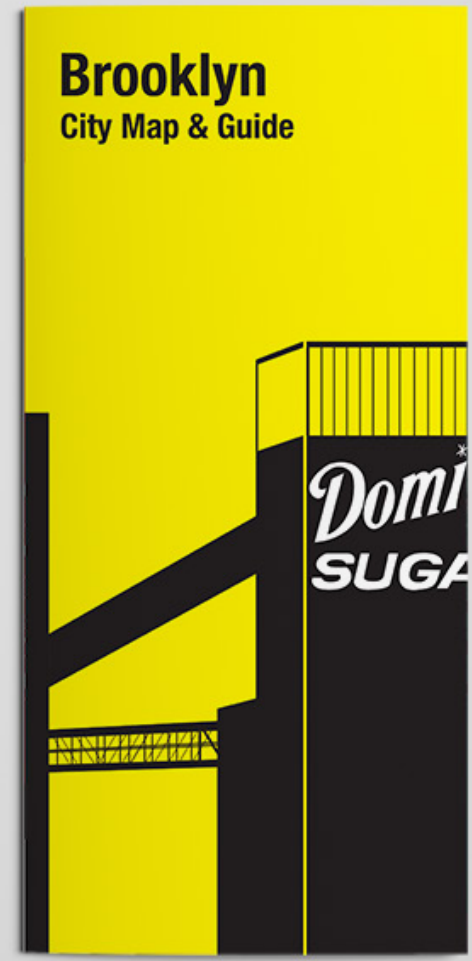
Gill Sans SemiBold 50 pt

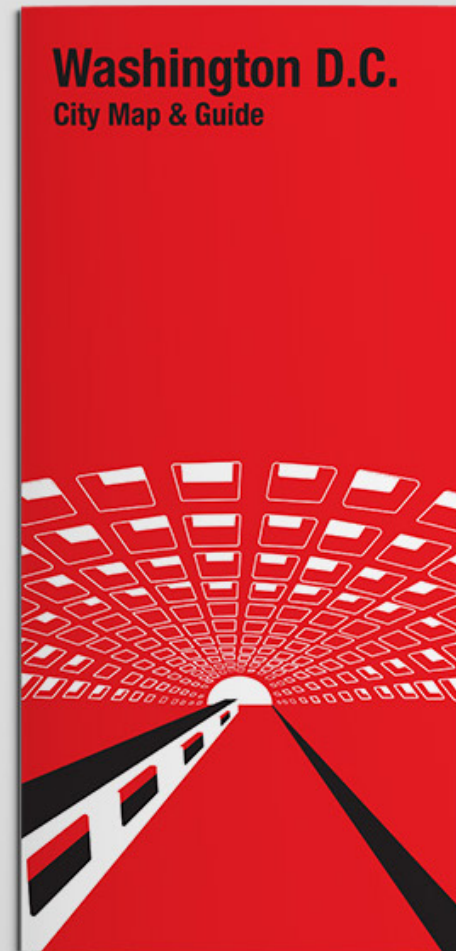
**I've lost you**

Gill Sans Regular 50pt

**I've lost you**

Gill Sans Light 50pt

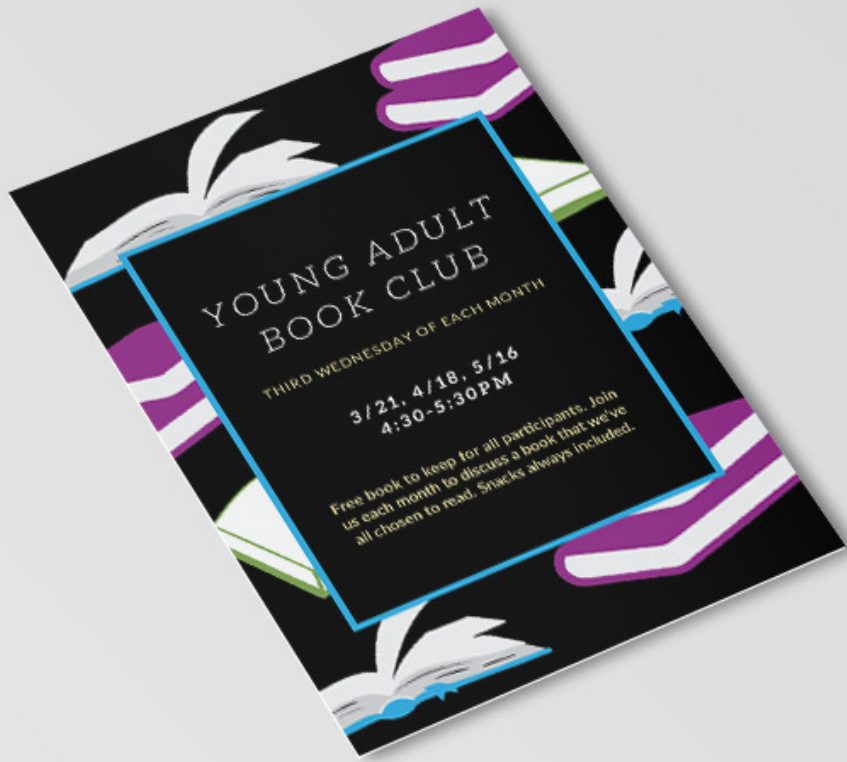


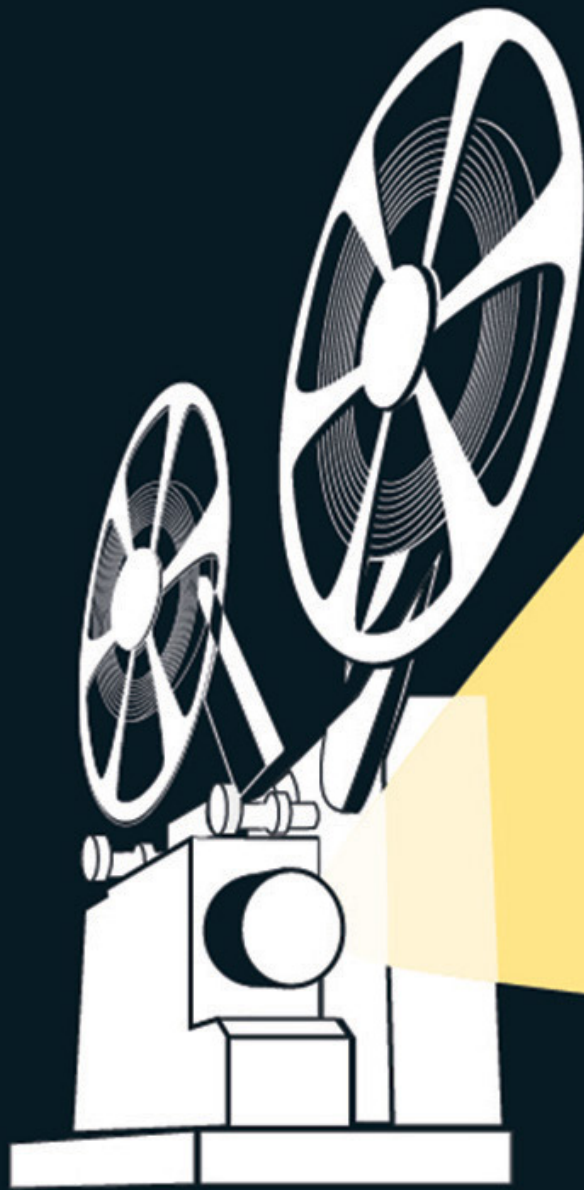




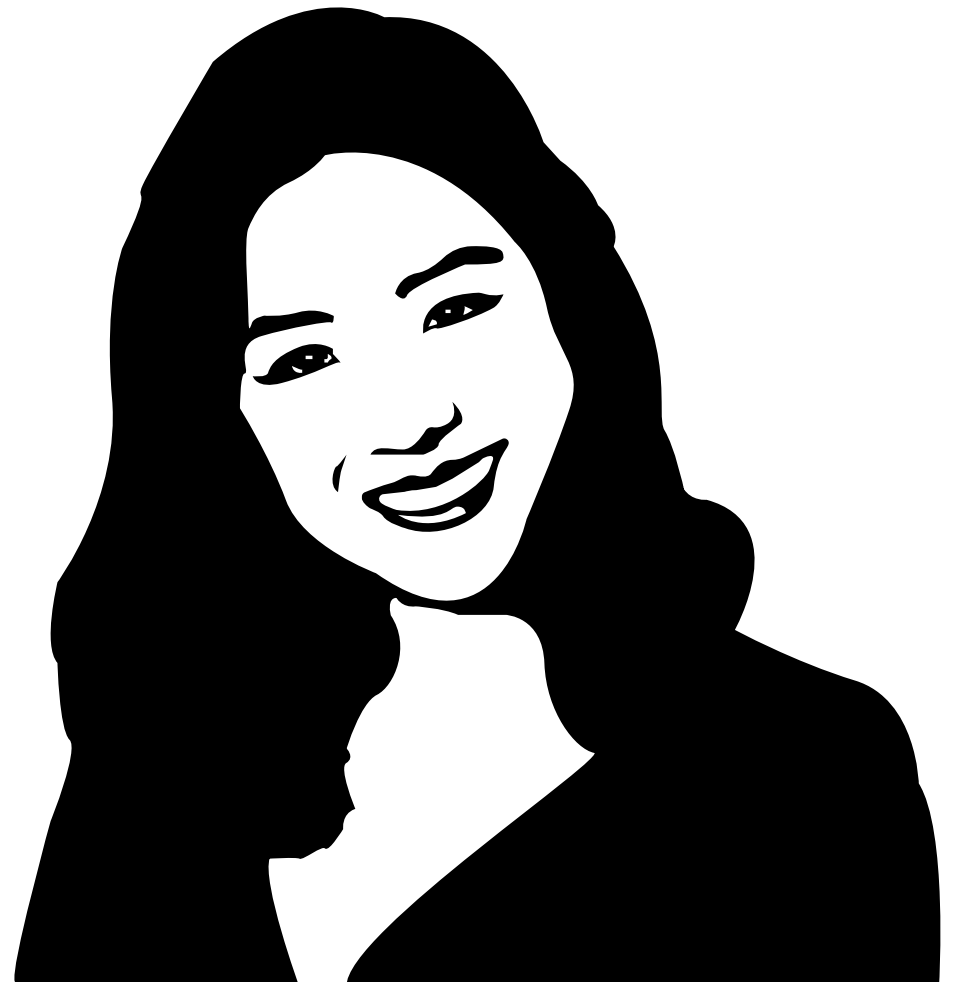


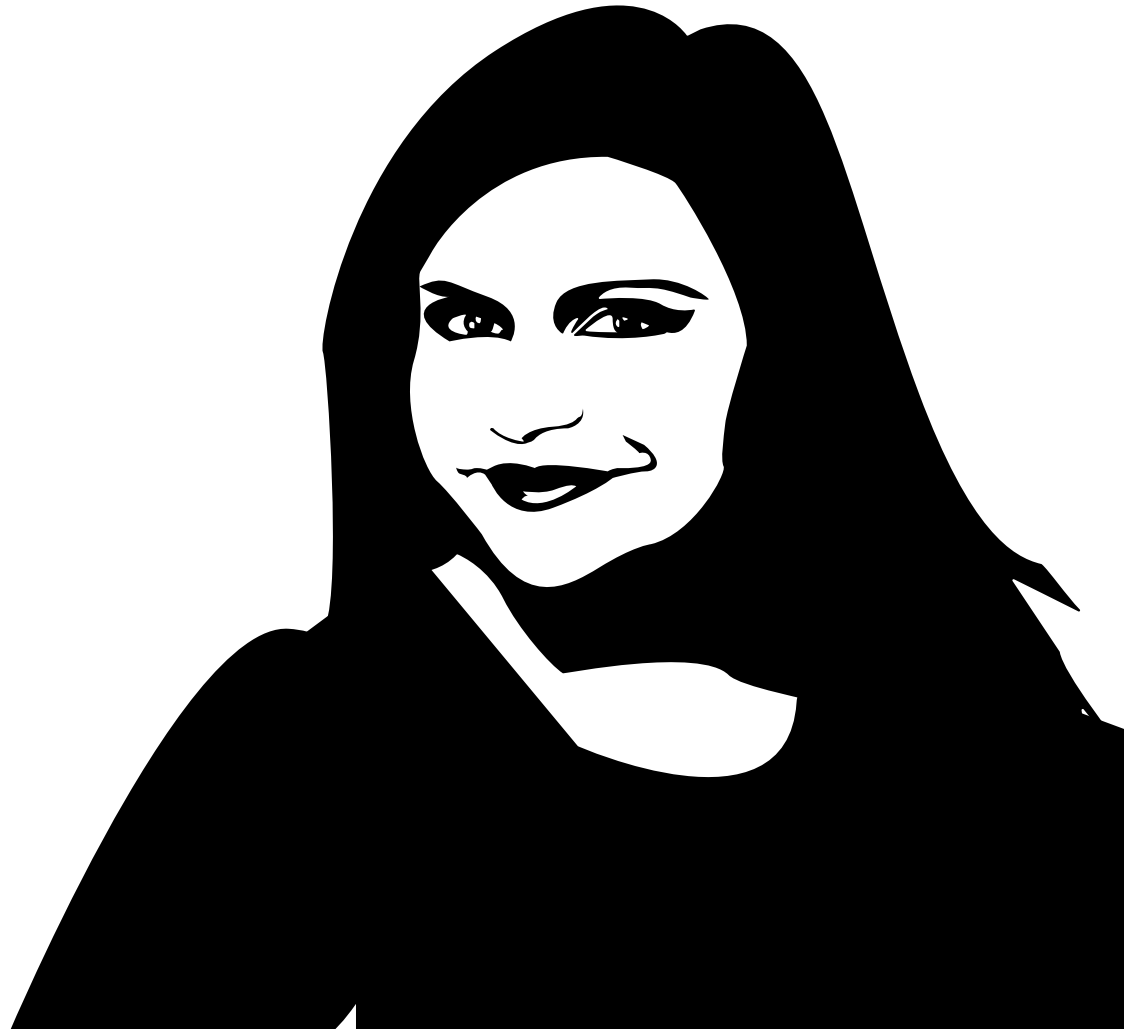


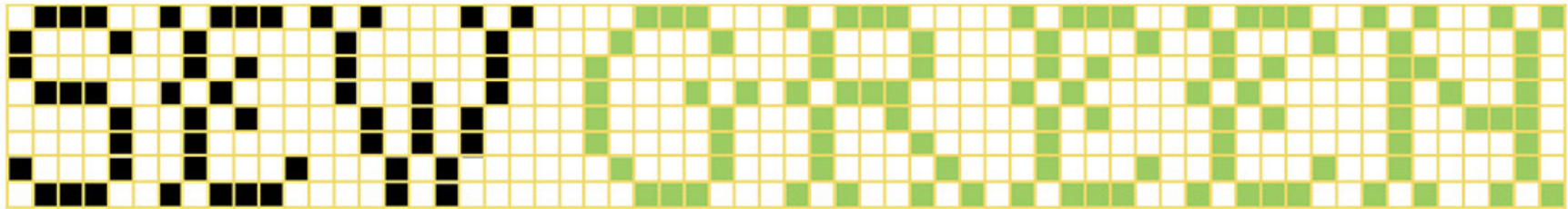




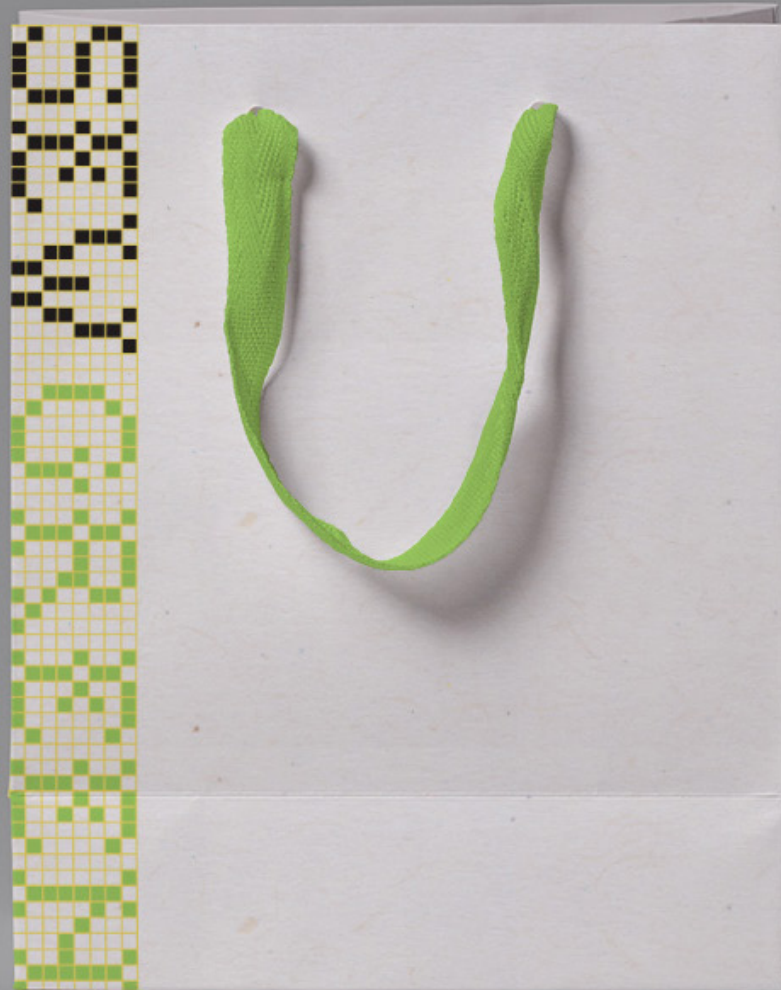










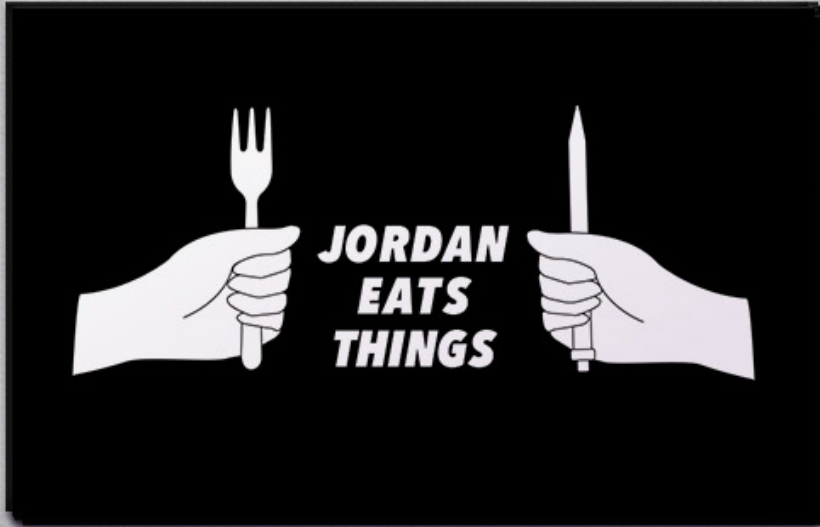


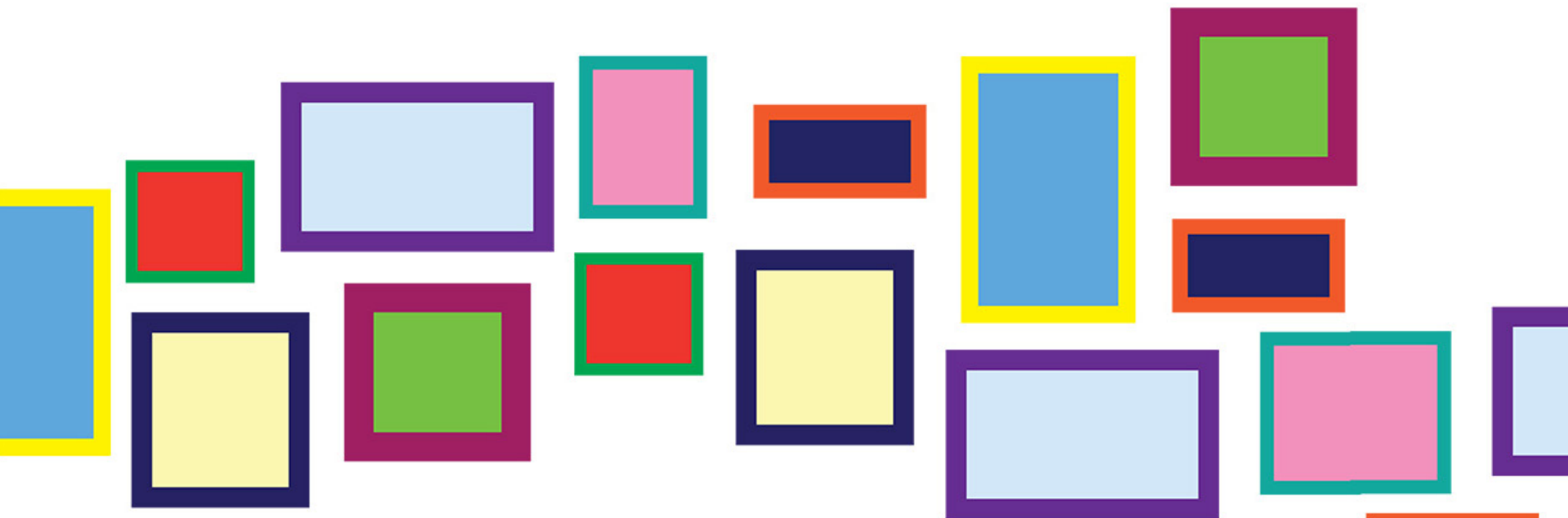


**FEMINIST FIBER ART**  
GALLERY OPENING | 5.4.2018 | 6PM

117 N. Cayuga St.  
Ithaca, NY 14850  
www.sewgreen.org

SEWGREEN





# GALLERY NIGHT AT THE LIBRARY





GALLERY NIGHT  
AT THE LIBRARY

Friday, July 6, 2018  
5 - 8 pm  
Dance Installation at 6:30